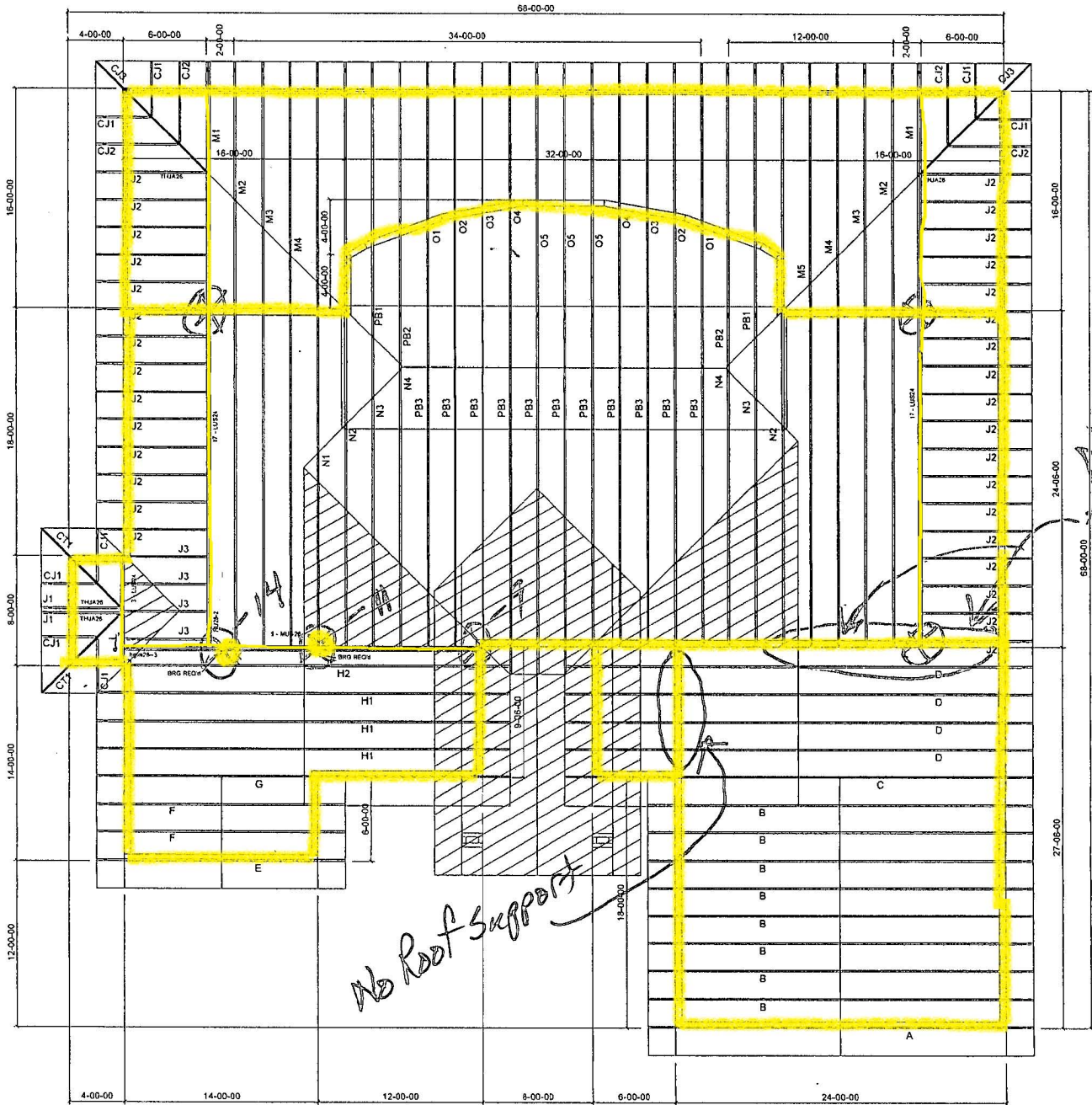


M-O Trusses show BOTH Hangered & Supported by wall on layout but shows Hangers



TRUSSES SUPPORTED BY HANGERS

TRUSSES SUPPORTED BY BEAMS/WALLS

$K - \text{O} - 9 = 4,788 \# - \text{OK}$

- Truss/Roof Bearing

$K - \text{O} - 11 = 5,456 \# - \text{No Support}$

$K - \text{O} - 14 = 12,012 \# - \text{No Support}$

$m-1 - \text{O} - 17 = 5,431 \# - \text{OK}$

$m-1 - \text{O} - 12 = 2,628 \# - \text{OK}$